

A three year project (2016-2019)
of 1.9 million euros funded by the
Interreg Sudoe programme
through the
European Regional Development Fund (ERDF),



coordinated by the
European Forest Institute's
Planted Planted Forests Facility



alongside 10 partners:



and 21 associated partners.



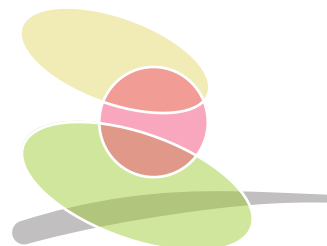
@plurifor



www.plurifor.efi.int



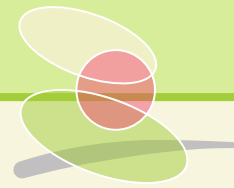
[christophe.orazio @ efi.int](mailto:christophe.orazio@efi.int)



Transnational
plans for the
management
of
forest risks



» Crossing borders to collaborate



PLURIFOR gathers scientific experts to design or improve management plans and tools tackling 8 forest risks.

Forests cover more than 30% of France, Spain and Portugal together, hosting biodiversity, providing environmental services and generating economic activities.

This is all threatened by biotic and abiotic hazards that do not stop at administrative borders.

In order to mitigate the consequences of these risks in south-western European forests, transboundary collaboration is a vital component of PLURIFOR.

Project partners and associate partners from **Portugal, Spain and France** pool their scientific knowledge and expertise to improve or create forest risk management plans and tools.



» Tackling 8 forest risks



» Working together

on **tools and risk management plans** to

» **1 Identify** needs for renewal or improvement



» **2 Improve or create** from scratch



» **3 Assess** efficiency & economy



» **4 Finalise and validate** then **transfer** to forest authorities and managers



» Exchanging knowledge

with forest managers, resulting in access to new tools or to already existing tools adapted to their regional conditions

with regional forest services, who will benefit from improved risk management plans or will be able to develop their own following guidelines created by PLURIFOR

PLURIFOR has set up an online inventory of forest damage which is updated by citizens via the smartphone App **SilvAlert** and validated by the regional authorities

www.plurifor.efi.int

